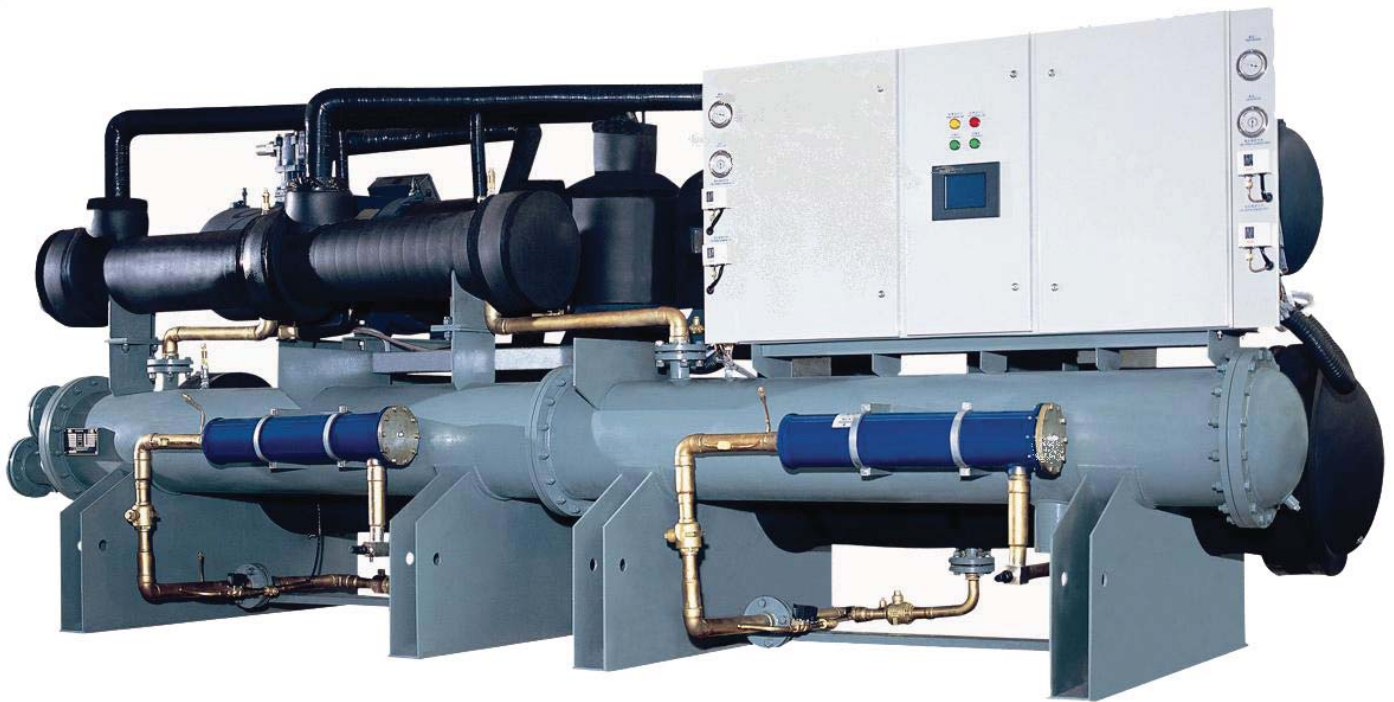




Benson

Chilled Water, Heat Recovery
Closed Loop Air Cooled Compressor type Scroll

Benson Air Cooled



Multi Stage Scroll Compressor systems tube in tube refrigerant tube type

- All Systems use R290 hydrocarbon refrigerant only 3GWP per KG.
- Units range from 120 to 370 kW

Design conditions

Chilled water

- Entering: 12° C
- Leaving: 5° C

Condensing temperature

- Ambient: 35° C

Heat Recovery

- Entering: 20° C
- Leaving: 60° C

Systems can be designed for different entering conditions.
Please ask your dealer for more information.

Technical Specifications

Model Number	Nominal Ratings				Evaporator		Heat Recovery		Cond fan kW	Length (mm)	Width (mm)	Height (mm)	dBa	Weight KG
	kWr Cooling	Heat Recovery kW	kW Input Cool	EER	M3 / H	Pipe Size	M3 / H	Pipe Size						
BENCW 1P CH 28 COAHR	27.8	8.4	8.4	3.3	4.8	DN25	1.4	DN20	0.55	1260	1100	1260	73	420
BENCW 1P CH 33 COAHR	33.3	10.0	10.2	3.3	5.7	DN32	1.7	DN20	0.75	1260	1100	1260	73	450
BENCW 1P CH 42 COAHR	41.9	12.6	12.7	3.3	7.2	DN32	2.2	DN20	0.37 x 2	1700	1100	2100	74	500
BENCW 1P CH 55 COAHR	54.8	16.5	16.8	3.3	9.4	DN40	2.8	DN25	0.55 x 2	1900	1100	2100	74	600
BENCW 1P CH 65 COAHR	65.6	19.7	20.3	3.2	11.3	DN40	3.4	DN25	0.75 x 2	1900	1100	2100	75	620
BENCW 1P CH 80 COAHR	82.6	24.8	25.5	3.2	14.2	DN50	4.3	DN25	0.55 x 3	2350	1100	2100	75	720
BENCW 1P CH 110 COAHR	109.7	32.9	33.5	3.3	18.9	DN65	5.7	DN32	0.55 x 4	1800	1800	2350	76	1250
BENCW 1P CH 130 COAHR	131.1	39.3	40.7	3.2	22.5	DN65	6.8	DN32	0.75 x 4	1800	1800	2350	76	1300
BENCW 1P CH 145 COAHR	144.4	43.3	42.8	3.4	24.8	DN65	7.5	DN40	0.75 x 4	2100	1800	2350	76	1400
BENCW 1P CH 165 COAHR	165.3	49.6	50.9	3.2	28.4	DN65	8.5	DN40	0.55 x 6	2200	2100	2400	77	1850
BENCW 1P CH 215 COAHR	216.6	65.0	65.7	3.3	37.3	DN80	11.2	DN50	1.5 x 4	2500	2100	2400	77	1950
BENCW 1P CH 255 COAHR	257.4	77.2	78.2	3.3	44.3	DN80	13.3	DN50	1.5 x 6	3000	2100	2400	79	2600
BENCW 1P CH 285 COAHR	284.5	85.3	88.6	3.2	48.9	DN100	14.7	DN65	1.5 x 6	3000	2100	2400	80	2800

- Scroll type compressor
- Refrigerant is R290. If installed in plant rooms we recommend an alarm system and ventilation system be installed. (Check your national standards)

Capacities tested

- water entering the evaporator at 12°C, leaving at 7°C
- condensing temperature ambient of 35°C
- heat recovery entering at 20°C, leaving at 60°C

Distributor

Benson Airconditioning

Phone: 1300 4 BENSON (1300 4 236766)

Email: bensonac@bigpond.net.au

Web: www.bensonairconditioning.com.au