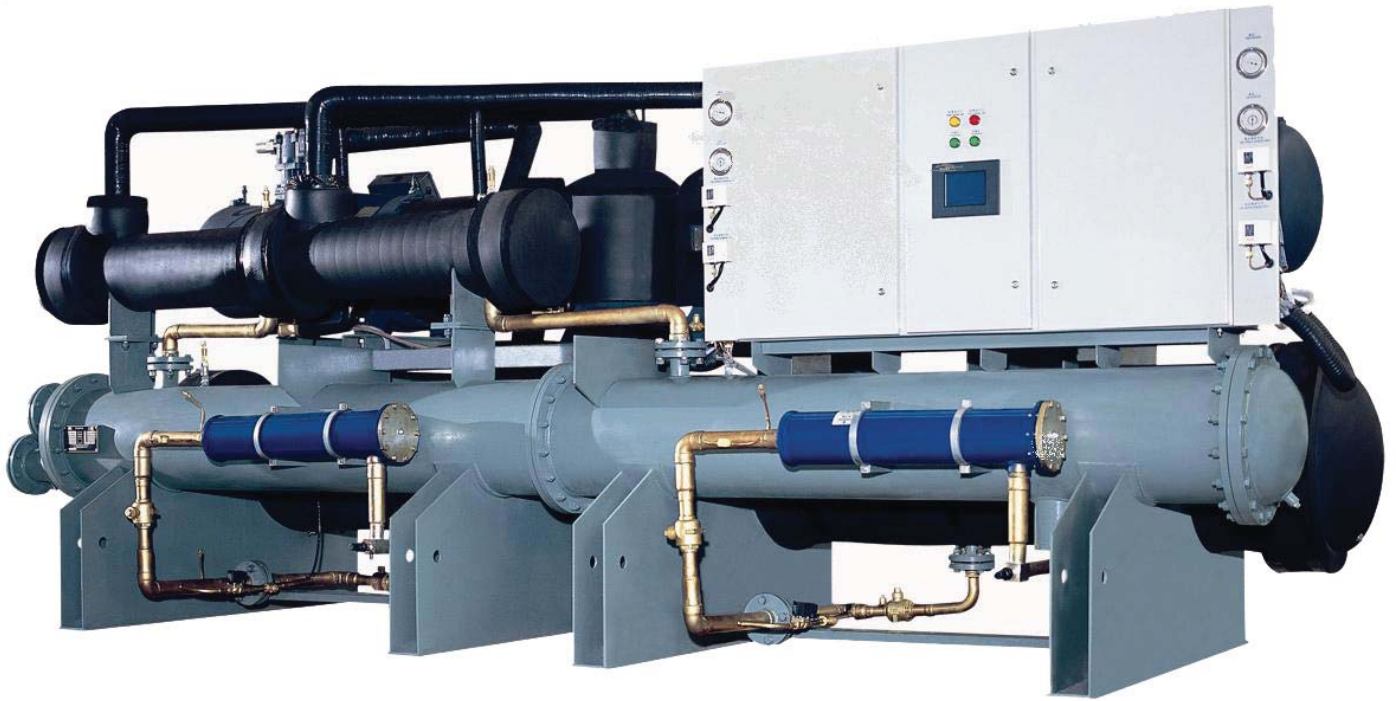


The Benson logo is a blue oval with a white border, containing the word "Benson" in a white, serif font.

**Benson**

Chilled Water Closed Heat Recovery  
Closed Loop Condenser Compressor Type Screw

Benson Air Cooled



- Multi stage screw compressor systems tube in tube water tube type flooded evaporator
- All Systems use R290 hydrocarbon refrigerant only 3GWP per KG.
- Units range from 145 to 700 kW

### Design conditions

Chilled water

- Entering: 12 °C
- Leaving: 5 °C

Condensing temperature

- Ambient: 35 °C

Heat Recovery

- Entering: 20 °C
- Leaving: 60 °C

Systems can be designed for different entering conditions.  
Please ask your dealer for more information.

# Technical Specifications

Model Number	Nominal Ratings				Evaporator		Heat Recovery							
	kWr Cooling	Heat Recovery kW	kW Input Cool	EER	M3 / H	Pipe Size	M3 / H	Pipe Size	Cond fan kW	Length (mm)	Width (mm)	Height (mm)	dBa	Weight KG
BENCW-1P-CHSC-145CO3CLHR	146.7	51.3	44.8	3.3	25.2	DN65	8.8	DN40	0.75 x 4	2100	1800	2350	76	1800
BENCW-1P-CHSC-165CO3CLHR	165.9	58.1	51.3	3.2	28.5	DN65	10.0	DN40	0.55 x 6	2200	2100	2400	76	2150
BENCW-1P-CHSC-220CO3CLHR	221.8	77.6	71.4	3.1	38.1	DN80	13.3	DN50	1.5 x 4	2500	2100	2400	77	2310
BENCW-1P-CHSC-250CO3CLHR	249.2	87.2	77.4	3.2	42.9	DN80	15.0	DN50	1.5 x 6	3000	2100	2400	77	2400
BENCW-1P-CHSC-280CO3CLHR	279	97.7	90.7	3.1	48.0	DN100	16.8	DN65	1.5 x 6	3000	2100	2400	78	3100
BENCW-1P-CHSC-310CO3CLHR	309.3	108.3	103.8	3.0	53.2	DN100	18.6	DN65	1.5 x 6	3500	2100	2400	79	3350
BENCW-1P-CHSC-350CO3CLHR	350.2	122.6	111.7	3.1	60.2	DN100	21.1	DN65	1.5 x 6	3500	2100	2400	80	3650
BENCW-1P-CHSC-425CO3CLHR	425.2	148.8	128.8	3.3	73.1	DN125	25.6	DN80	1.5 x 8	5000	2100	2400	80	3800
BENCW-1P-CHSC-500CO3CLHR	501.8	175.6	153.7	3.3	86.3	DN125	30.2	DN80	1.5 x 10	5000	2100	2400	81	4300
BENCW-1P-CHSC-550CO3CLHR	550.4	192.6	172.0	3.2	94.7	DN125	33.1	DN80	1.5 x 12	6000	2100	2400	81	6200
BENCW-1P-CHSC-620CO3CLHR	618.6	216.5	207.6	3.0	106.4	DN150	37.2	DN100	1.5 x 12	6000	2100	2400	82	6750
BENCW-1P-CHSC-700CO3CLHR	700.4	245.1	220.4	3.2	120.4	DN150	42.2	DN100	1.5 x 14	7000	2100	2400	82	7300

- Screw type compressor with Zero, 25%, 50%, 75% and 100% unloading
- Refrigerant is R290. If installed in plant rooms we recommend an alarm system and ventilation system be installed. (Check your national standards)

### Capacities tested

- water entering the evaporator at 12°C, leaving at 7°C
- condensing temperature ambient of 35°C
- heat recovery entering at 20°C, leaving at 60°C

### Distributor

#### Benson Airconditioning

Phone: 1300 4 BENSON (1300 4 236766)

Email: [bensonac@bigpond.net.au](mailto:bensonac@bigpond.net.au)

Web: [www.bensonairconditioning.com.au](http://www.bensonairconditioning.com.au)