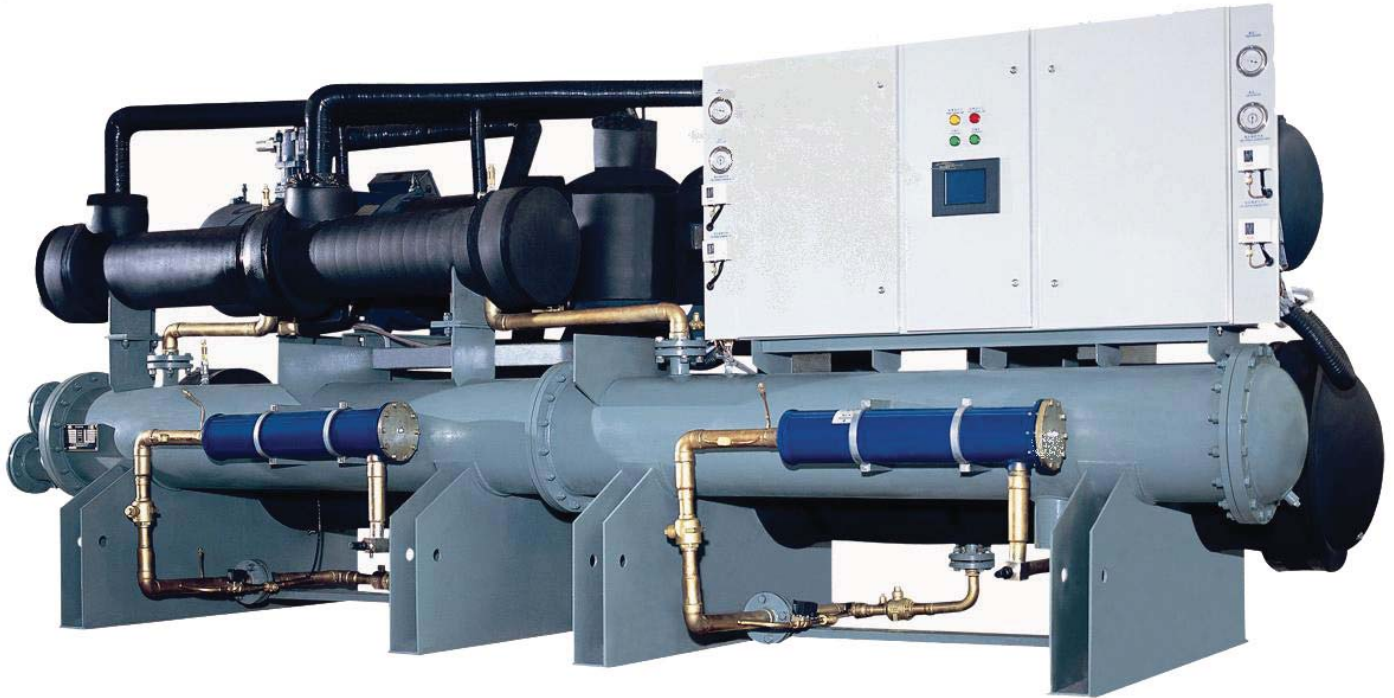


Benson

Chilled Water, Reverse Cycle
Heat Recovery, Closed Loop Condenser

Benson Air Cooled Reverse Cycle



- Multi stage scroll compressor systems tube in tube refrigerant tube type
- All Systems use R290 hydrocarbon refrigerant only 3GWP per KG.
- Units range from 28 to 285 kW

Chilled water

- Entering: 12°C
- Leaving: 5°C

Condensing temperature

- Ambient: 35°C

Heat Recovery

- Entering: 20°C
- Leaving: 60°C

Systems can be designed for different entering conditions.
Please ask your dealer for more information.

Benson Air Cooled Reverse Cycle

Technical Specifications

Model Number	Nominal Ratings						Condenser		Heat Recovery								
	kWr Cooling	kWr Heating	Heat Recovery kW	kW Input Cool	EER	kW Input Heating	COP	M3 / H	Pipe Size	M3 / H	Pipe Size	Cond Fan kW	Length (mm)	Width (mm)	Height (mm)	dBa	Weight KG
BENCW-1P-CH-28RV3WHR	27.8	29.0	8.4	8.4	3.3	8.2	3.5	4.8	DN25	1.4	DN20	0.55	1260	1100	1280	73	420
BENCW-1P-CH-33RV3WHR	33.3	35.6	10.0	10.2	3.3	9.9	3.6	5.7	DN32	1.7	DN20	0.75	1260	1100	1280	73	450
BENCW-1P-CH-42RV3WHR	41.9	44.6	12.6	12.7	3.3	12.3	3.6	7.2	DN32	2.2	DN20	0.37 x 2	1700	1100	2070	74	500
BENCW-1P-CH-55RV3WHR	54.8	58.6	16.5	16.8	3.3	16.5	3.6	9.4	DN40	2.8	DN25	0.55 x 2	1900	1100	2100	74	600
BENCW-1P-CH-65RV3WHR	65.6	70.3	19.7	20.3	3.2	19.9	3.5	11.3	DN40	3.4	DN25	0.75 x 2	1900	1100	2100	75	620
BENCW-1P-CH-80RV3WHR	82.6	88.4	24.8	25.5	3.2	24.8	3.6	14.2	DN50	4.3	DN25	0.55 x 3	2350	1100	2100	75	720
BENCW-1P-CH-110RV3WHR	109.7	117.1	32.9	33.5	3.3	33	3.5	18.9	DN65	5.7	DN32	0.55 x 4	1800	1800	2350	76	1250
BENCW-1P-CH-130RV3WHR	131.1	140.7	39.3	40.7	3.2	39.7	3.5	22.5	DN65	6.8	DN32	0.75 x 4	1800	1800	2350	76	1300
BENCW-1P-CH-145RV3WHR	144.4	152.1	43.3	42.8	3.4	41.2	3.7	24.8	DN65	7.5	DN40	0.75 x 4	2100	1800	2350	76	1400
BENCW-1P-CH-165RV3WHR	165.3	176.8	49.6	50.9	3.2	49.7	3.6	28.4	DN65	8.5	DN40	0.55 x 6	2200	2100	2400	77	1850
BENCW-1P-CH-215RV3WHR	216.6	227.8	65.0	65.7	3.3	63.2	3.6	37.3	DN80	11.2	DN50	1.5 x 4	2500	2100	2400	77	1950
BENCW-1P-CH-255RV3WHR	257.4	271.6	77.2	78.2	3.3	75.5	3.6	44.3	DN80	13.3	DN50	1.1 x 6	3000	2100	2400	79	2600
BENCW-1P-CH-285RV3WHR	284.5	303.5	85.3	88.6	3.2	85.3	3.6	48.9	DN100	14.7	DN65	1.5 x 6	3000	2100	2400	80	2800

- Scroll type compressor
- Refrigerant is R290. If installed in plant rooms we recommend an alarm system and ventilation system be installed. (Check your national standards)

Capacities tested

- water entering the evaporator at 12°C, leaving at 7°C
- condensing temperature ambient of 35°C
- heat recovery entering at 20°C, leaving at 60°C

Distributor

Benson Airconditioning

Phone: 1300 4 BENSON (1300 4 236766)

Email: bensonac@bigpond.net.au

Web: www.bensonairconditioning.com.au