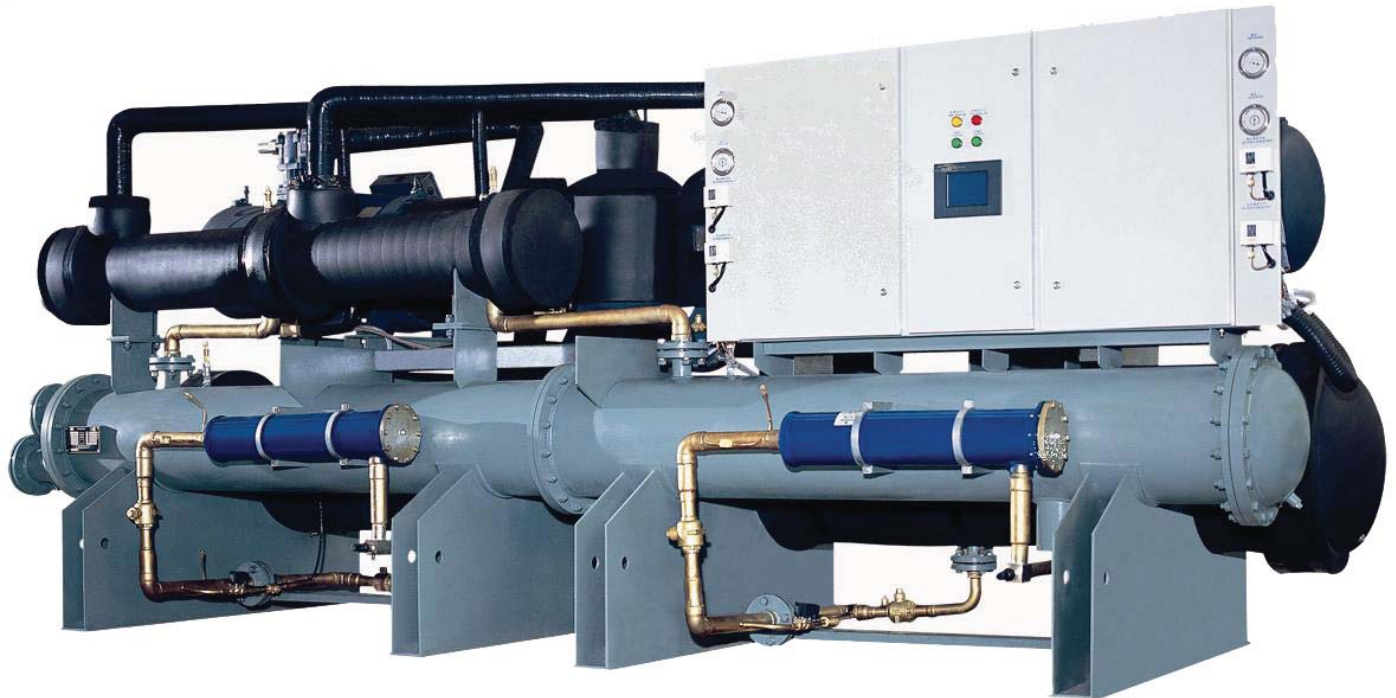




**Benson**

Chilled Water, Reverse Cycle, Heat Recovery  
Closed Loop Condenser Compressor Type Screw

## Benson Air Cooled Reverse Cycle



- Multi stage screw compressor systems tube in tube water tube type flooded evaporator
- All Systems use R290 hydrocarbon refrigerant only 3GWP per KG.
- Units range from 145 to 700 kW

### Design conditions

Chilled water

- Entering: 12 °C
- Leaving: 5 °C

Condensing temperature

- Ambient: 35 °C

Heat Recovery

- Entering: 20 °C
- Leaving: 60 °C

Systems can be designed for different entering conditions.  
Please ask your dealer for more information.



# Benson

Chilled Water, Reverse Cycle, Heat Recovery  
Closed Loop Condenser Compressor Type Screw

## Benson Air Cooled Reverse Cycle

# Technical Specifications

Model Number	Nominal Ratings							Evaporator		Heat Recovery		Length (mm)	Width (mm)	Height (mm)	dBa	Weight KG	
	kW <sub>r</sub> Cooling	kW <sub>r</sub> Heating	Heat Recovery kW	kW Input Cool	EER	kW Input Heating	COP	M <sup>3</sup> / H	Pipe Size	M <sup>3</sup> / H	Pipe Size						Cond Fan kW
BENCW-1P-CHCS-145RV3CLHR	146.7	153.5	51.3	44.8	3.3	42.7	3.6	25.2	DN65	8.8	DN40	0.75 x 4	2100	1800	2250	76	1800
BENCW-1P-CHCS-165RV3CLHR	165.9	174.1	58.1	51.3	3.2	48.8	3.6	28.5	DN65	10.0	DN40	0.55 x 6	2200	2100	2400	76	2150
BENCW-1P-CHCS-220RV3CLHR	221.8	235.4	77.6	71.4	3.1	68	3.5	38.1	DN80	13.3	DN50	1.5 x 4	2500	2100	2400	77	2310
BENCW-1P-CHCS-250RV3CLHR	249.2	267.0	87.2	77.4	3.2	73.8	3.6	42.9	DN80	15.0	DN50	1.5 x 6	3000	2100	2400	77	2400
BENCW-1P-CHCS-280RV3CLHR	279	297.1	97.7	90.7	3.1	86.6	3.4	48.0	DN100	16.8	DN65	1.5 x 6	3000	2100	2400	78	3100
BENCW-1P-CHCS-310RV3CLHR	309.3	328.4	108.3	103.8	3.0	99.7	3.3	53.2	DN 100	18.6	DN65	1.5 x 6	3500	2100	2400	79	3350
BENCW-1P-CHCS-350RV3CLHR	350.2	370.8	122.6	111.7	3.1	106.6	3.5	60.2	DN100	21.1	DN65	1.5 x 6	3500	2100	2400	80	3650
BENCW-1P-CHCS-425RV3CLHR	425.2	444.0	148.8	128.8	3.3	122.9	3.6	73.1	DN125	25.6	DN80	1.5 x 8	5000	2100	2400	80	3800
BENCW-1P-CHCS-500RV3CLHR	501.8	525.5	175.6	153.7	3.3	146.6	3.6	86.3	DN125	30.2	DN80	1.5x 10	5000	2100	2400	81	4300
BENCW-1P-CHCS-550RV3CLHR	550.4	579.6	192.6	172.0	3.2	164.2	3.5	94.7	DN125	33.1	DN80	1.5 x 12	6000	2100	2400	81	6200
BENCW-1P-CHCS-620RV3CLHR	618.6	656.8	216.5	207.6	3.0	199.5	3.3	106.4	DN150	37.2	DN100	1.5 x 12	6000	2100	2400	82	6750
BENCW-1P-CHCS-700RV3CLHR	700.4	738.8	245.1	220.4	3.2	210.2	3.5	120.4	DN150	42.2	DN100	1.5 x 14	7000	2100	2400	82	7300

- Screw type compressor with Zero, 25%, 50%, 75% and 100% unloading
- Refrigerant is R290. If installed in plant rooms we recommend an alarm system and ventilation system be installed. (Check your national standards)

### Capacities tested

- water entering the evaporator at 12°C, leaving at 7°C
- condensing temperature ambient of 35°C
- heat recovery entering at 20°C, leaving at 60°C

### Distributor

#### Benson Airconditioning

Phone: 1300 4 BENSON (1300 4 236766)

Email: [bensonac@bigpond.net.au](mailto:bensonac@bigpond.net.au)

Web: [www.bensonairconditioning.com.au](http://www.bensonairconditioning.com.au)