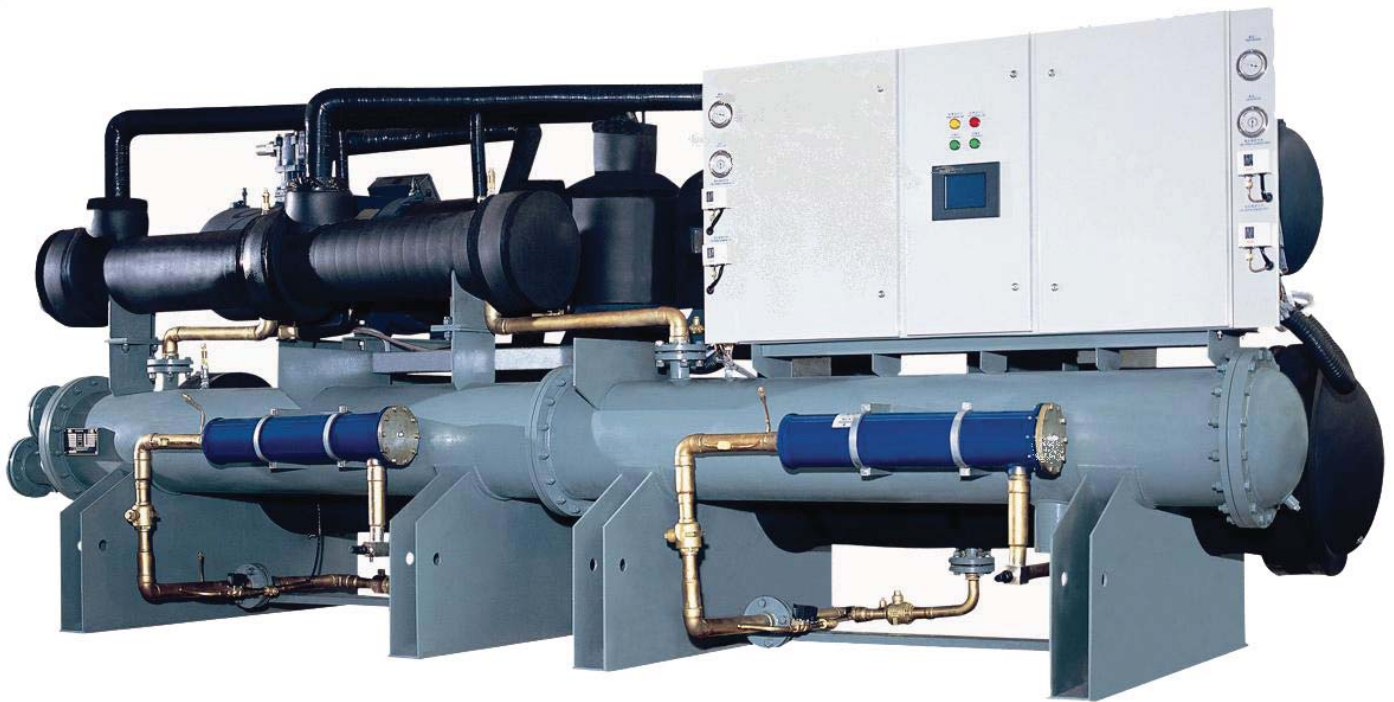


The Benson logo is a blue oval with a white border, containing the word "Benson" in a white, serif font.

Benson

**Chilled Water, Heat Recovery
Water Cooled Condenser, Compressor type Scroll**

Benson Water Cooled



- Multi stage scroll compressor systems tube in tube water tube type flooded evaporator
- All Systems use R290 hydrocarbon refrigerant only 3GWP per KG.
- Units range from 120 to 370 kW

Design conditions

Chilled water

- Entering: 12°C
- Leaving: 5°C

Condensing water

- Entering: 30°C
- Leaving: 35°C

Heat Recovery

- Entering: 20°C
- Leaving: 60°C

**Systems can be designed for different entering conditions.
Please ask your dealer for more information.**

Technical Specifications

Model Number	Nominal Ratings				Evaporator		Condenser		Heat Recovery		Length (mm)	Width (mm)	Height (mm)	dBa	Weight KG
	kWr	Heat Recovery kW	kW Input	EER	M3 / H	Pipe Size	M3 / H	Pipe Size	M3 / H	Pipe Size					
BENCW-1P-CH-120CO3WHR	122.9	30.7	25.3	4.86	21.4	DN65	25.5	DN65	5.4	DN32	2780	760	1465	70	1000
BENCW-1P-CH-145CO3WHR	146.3	36.6	30.7	4.77	25.1	DN65	30.4	DN65	6.3	DN32	3180	760	1530	71	1180
BENCW-1P-CH-160CO3WHR	159.7	39.9	33.4	4.78	27.5	DN65	33.2	DN65	6.9	DN32	3130	810	1685	72	1250
BENCW-1P-CH-185CO3WHR	184.2	46.1	40.0	4.61	31.7	DN65	38.6	DN65	7.9	DN40	2450	860	1725	73	1650
BENCW-1P-CH-240CO3WHR	243.2	60.8	50.6	4.81	41.9	DN80	50.5	DN80	10.5	DN40	2630	860	1725	74	2250
BENCW-1P-CH-285CO3WHR	284.2	71.0	58.5	4.86	48.9	DN80	58.9	DN80	12.2	DN50	2550	860	1775	74	2400
BENCW-1P-CH-320CO3WHR	319.4	79.9	66.8	4.78	55.0	DN80	66.4	DN80	13.8	DN50	2780	860	1775	75	2500
BENCW-1P-CH-340CO3WHR	344.0	86.0	73.4	4.69	59.2	DN100	71.8	DN80	14.8	DN50	2900	860	1775	75	2600
BENCW-1P-CH-370CO3WHR	368.5	92.1	78.0	4.72	63.5	DN100	76.8	DN80	15.8	DN65	3100	860	1775	75	2700

- Scroll type compressor
- Refrigerant is R290. If installed in plant rooms we recommend an alarm system and ventilation system be installed. (Check your national standards)

Capacities tested

- water entering the evaporator at 12°C, leaving at 7°C
- water entering the condenser at 30°C, leaving at 35°C
- heat recovery entering at 20°C, leaving at 60°C

Distributor

Benson Airconditioning

Phone: 1300 4 BENSON (1300 4 236766)

Email: bensonac@bigpond.net.au

Web: www.bensonairconditioning.com.au